

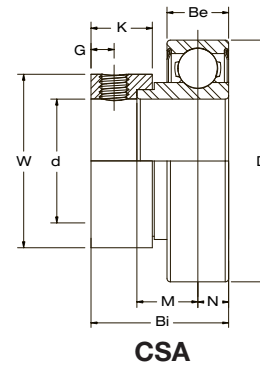
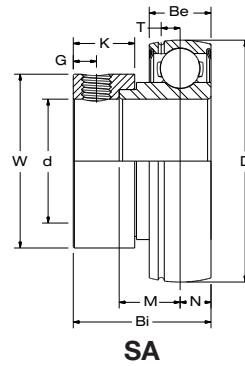


# SA 200 AND CSA 200 SERIES

Light-Duty Ball Bearing  
Eccentric Lock

**TURNER**  
Mounted Bearings

Available Seal Style:



Bearing Insert	Shaft Dia. d in. mm.	Setscrew Used in. mm.	Dimensions in. mm.										Load Rating lbs. kN.		Weight lbs. kg.
			D	Bi	Be	N	M	W	K	G	T	Dynamic Cr	Static Cor		
SA 201	CSA 201	12	M6 x 1	1.5748 40.0	1.1260 28.6	0.4724 12.0	0.2362 6.0	0.5157 13.1	1.126 28.6	0.532 13.5	0.1969 5.0	0.1378 3.5	2,147 9.55	1,075 4.78	0.4 0.2
SA 201-8	CSA 201-8	1/2	1/4-28												
SA 202	CSA 202	15	M6 x 1												
SA 202	CSA 202-10	5/8	1/4-28												
SA 203	CSA 203	17	M6 x 1	1.8504 47.0	1.2205 31.0	0.5512 14.0	0.2756 7.0	0.5709 14.5	1.311 33.3	0.532 13.5	0.1969 5.0	0.1575 4.0	2,883 12.82	1,496 6.65	0.5 0.2
SA 204-12	CSA 204-12	3/4	1/4-28												
SA 204	CSA 204	20	M6 x 1												
SA 205-14	CSA 205-14	7/8	1/4-28												
SA 205-15	CSA 205-15	15/16	1/4-28	2.0472 52.0	1.2402 31.5	0.5906 15.0	0.2953 7.5	0.5709 14.5	1.500 38.1	0.532 13.5	0.1969 5.0	0.1693 4.3	3,155 14.04	1,810 8.05	0.6 0.3
SA 205	CSA 205	25	M6 x 1												
SA 205-16	CSA 205-16	1	1/4-28												
SA 206-17	CSA 206-17	1 1/16	1/4-28												
SA 206-18	CSA 206-18	1 1/8	1/4-28	2.441 62.0	1.4055 35.7	0.6299 16.0	0.3150 8.0	0.6220 15.8	1.752 44.5	0.626 15.9	0.2362 6.0	0.1929 4.9	4,377 19.47	2,569 11.43	0.9 0.4
SA 206	CSA 206	30	M6 x 1												
SA 206-19	CSA 206-19	1 3/16	1/4-28												
SA 206-20	CSA 206-20	1 1/4	1/4-28												
SA 207-20	CSA 207-20	1 1/4	5/16-24	2.8346 72.0	1.5315 38.9	0.6693 17.0	0.3346 8.5	0.6654 16.9	2.189 55.6	0.689 17.5	0.2559 6.5	0.2165 5.5	5,775 25.69	3,497 15.56	1.3 0.6
SA 207-21	CSA 207-21	1 15/16	5/16-24												
SA 207-22	CSA 207-22	1 3/8	5/16-24												
SA 207	CSA 207	35	M8 x 1												
SA 207-23	CSA 207-23	1 7/16	5/16-24	3.1496 80.0	1.7205 43.7	0.7087 18.0	0.3543 9.0	0.8346 21.2	2.374 60.3	0.721 18.3	0.2559 6.5	0.2362 6.0	6,634 29.51	4,079 18.14	1.7 0.8
SA 208-24	CSA 208-24	1 1/2	5/16-24												
SA 208-25	CSA 208-25	1 9/16	5/16-24												
SA 208	CSA 208	40	M8 x 1												
SA 209-26	CSA 209-26	1 5/8	5/16-24	3.3465 85.0	1.7205 43.7	0.7480 19.0	0.3740 9.5	0.8150 20.7	2.500 63.5	0.721 18.3	0.2559 6.5	0.2402 6.1	7,160 31.85	4,676 20.80	1.8 0.8
SA 209-27	CSA 209-27	1 11/16	5/16-24												
SA 209-28	CSA 209-28	1 3/4	5/16-24												
SA 209	CSA 209	45	M8 x 1												
SA 210-30	CSA 210-30	1 7/8	5/16-24	3.5433 90.0	1.7205 43.7	0.7874 20.0	0.3937 10.0	0.7953 20.2	2.752 69.9	0.721 18.3	0.2559 6.5	0.2598 6.6	7,867 35.00	5,330 23.71	2.2 1.0
SA 210-31	CSA 210-31	1 15/16	5/16-24												
SA 210	CSA 210	50	M8 x 1												
SA 210-32	CSA 210-32	2	5/16-24												
SA 211-32	CSA 211-32	2	3/8-24	3.9370 100.0	1.9055 48.4	0.8268 21.0	0.4134 10.5	0.8661 22.0	3.000 76.2	0.815 20.7	0.3150 8.0	0.2835 7.2	9,743 43.34	6,608 29.40	3.0 1.4
SA 211-34	CSA 211-34	2 1/8	3/8-24												
SA 211	CSA 211	55	M10 x 1.25												
SA 211-35	CSA 211-35	2 3/16	3/8-24												
SA 212-36	CSA 212-36	2 1/4	3/8-24	4.3307 110.0	2.0906 53.1	0.8661 22.0	0.4331 11.0	1.0315 26.2	3.315 84.2	0.878 22.3	0.3150 8.0	0.2953 7.5	10,720 47.69	7,516 33.43	4.1 1.9
SA 212	CSA 212	60	M10 x 1.25												
SA 212-38	CSA 212-38	2 3/8	3/8-24												
SA 212-39	CSA 212-39	2 7/16	3/8-24												

**NOTE:** Standard bearing is regreaseable. Non-regreaseable bearings are available upon request.